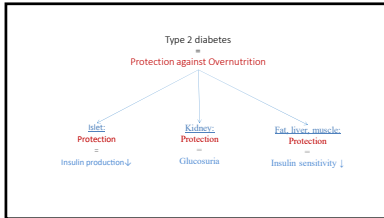
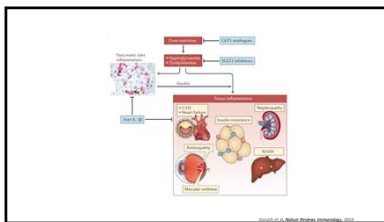
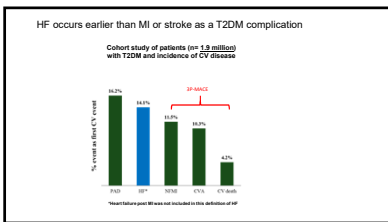


Bedeutung immunologischer Prozesse bei Diabetes



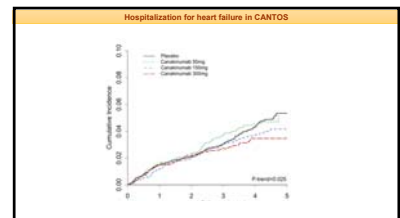
THE NEW ENGLAND JOURNAL OF MEDICINE
ORIGINAL ARTICLE
Interleukin-1–Receptor Antagonist in Type 2 Diabetes Mellitus
 Claus M. Larsen, M.D., Mujam Faulenbach, M.D., Allan Vaag, M.D., Ph.D., Aage Vøllestad, M.Sc., Jan A. Øster, Ph.D., Burkhardt Seifert, Ph.D., Thomas Mandrup-Poulsen, M.D., Ph.D., and Marc Y. Donath, M.D.

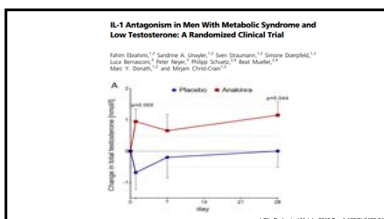
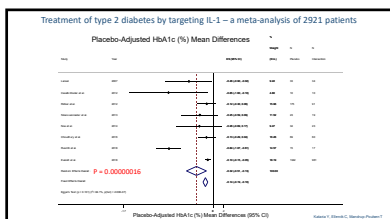
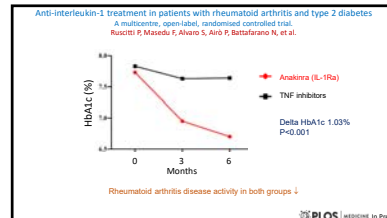
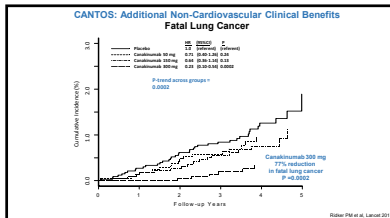


THE NEW ENGLAND JOURNAL OF MEDICINE
ORIGINAL ARTICLE
Antiinflammatory Therapy with Canakinumab for Atherosclerotic Disease

Therapeutic approaches to obesity-related type 2 diabetes with refractory glycemic control
 Metabolic complications associated with obesity: hyperglycemia, hypertension, dyslipidemia, and atherosclerosis.

Hyperglycemia induced β -cell production of IL-1 β





- Anti-IL-1β Treatment in patient with a metabolic syndrome**
- BENEFITS:**
- Cardiovascular complications ↓ (not shown for DPP-IV inhibitors)
 - Heart failure ↓ (not shown for pcsk9 inhibitors and GLP1-analogs)
 - Glycaemia ↓
 - β-cell function ↑
 - Gout ↓
 - Arthritis ↓
 - Lung cancer mortality ↓
 - No hypoglycaemia
 - Convenient (injection every 3 months)
 - Possible effects: renal & eye protection, NASH prevention, treatment of neuropathy & periodontitis
- Limitations:**
- Severe infections
 - Cost
 - Commitment of companies
 - Hurdles of health authorities

SYSTEMIC INTERLEUKIN 1β INHIBITION IN PROLIFERATIVE DIABETIC RETINOPATHY

- HbA1c improved from 7.92% to 7.30% (P<0.05)
- No progression of neovascularizations within 24 weeks
- Reduction in retinal edema

